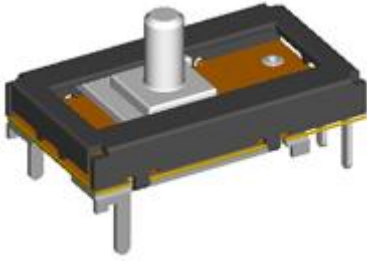


Model(型號): **S09K11H21**

► Download PDF file



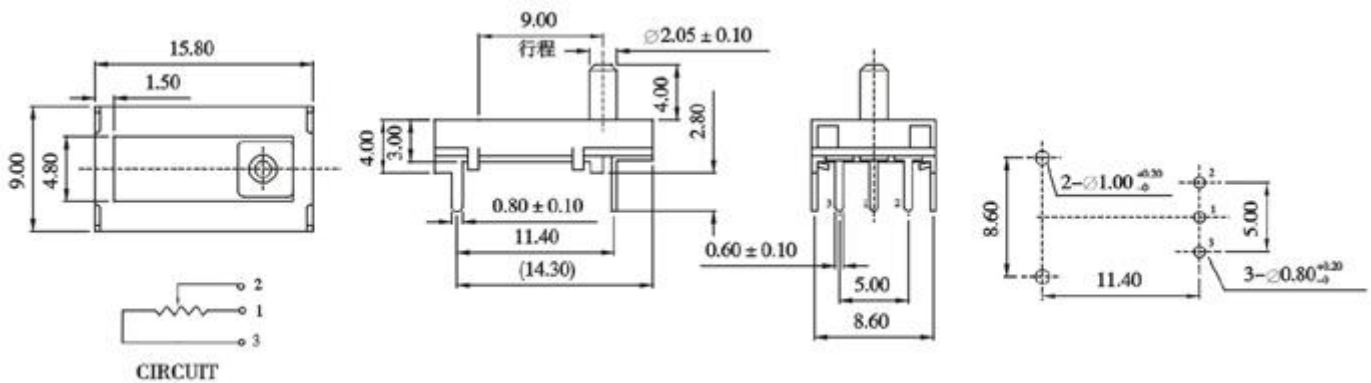
**Features:(特點):**

High-precision linearity is attained by high-precision printing technology.  
Space-save design,contributing to reduction in the size and weight of sets.  
Reduced torque load at the time of driving the motor provides a light operating force.  
Operating temperatures as high as 105° c supported.(type B)

**Applications(作用):**

For feedback detections of various types of motor drive units.  
For detection of all size.  
Detecting the angle of a vehicle headlight.(type B).

**Dimensions(規格圖):**



**Specifications(規格)**

<b>Electrical Characteristics [ 電氣性能 ]</b>	
Total resistance [ 全阻抗值 ]	1KΩ ~ 1MΩ
Total resistance tolerance [ 全阻抗值容許差 ]	±30%
Ratings power(w) [ 額定功率 ]	5V DC
Resistance taper [ 阻抗變化特性 ]	B
Residual resistance [ 殘留阻值 ]	全阻值3%Ω Max.
Sliding noise [ 滑動雜音 ]	300mV Max
Insulation resistance [ 絕緣阻抗 ]	100MΩ Min. at DC 250V
Withstanding voltage [ 耐電壓 ]	1 minute at AC 250V
Max. operating voltage [ 最高使用電壓 ]	AC 50V
<b>Mechanical Characteristics [ 機械性能 ]</b>	
Operation torque [ 回轉力矩 ]	10~80gf.cm
Rotation stopper strength [ 止動強度 ]	3Kgf.cm Min
Switch Travel [ 開關移動量 ]	9±0.5 mm
<b>Endurance Characteristics [ 耐久性能 ]</b>	
Rotational life [ 回轉壽命 ]	More than 100,000 cycles