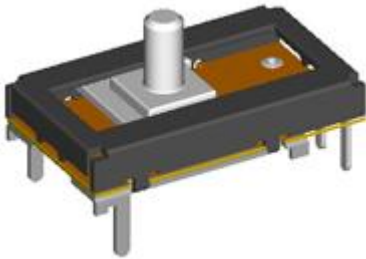


Model(型號): 直滑式電位器-----S09K11H21

[▶ 下載PDF文檔](#)



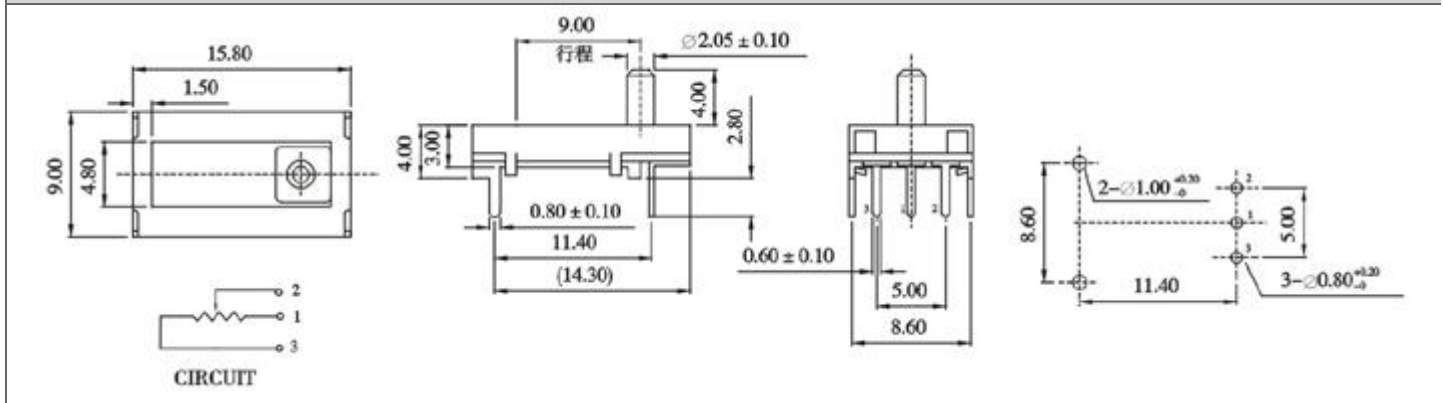
**特點:**

極佳的操作手感，用於熱控器，清晰的定位手感。用於電子樂器，平骨與濕滑的手感，低噪音，長壽命，高精確的衰減調控。

**作用:**

電子琴、混音器的聲減調控汽車空調的熱控或模式轉換測量儀器。

**Dimensions(規格圖):**



**Specifications( 規格)**

Electrical Characteristics [ 電氣性能 ]	
Total resistance [ 全阻抗值 ]	1KΩ ~ 1MΩ
Total resistance tolerance [ 全阻抗值容許差 ]	±30%
Ratings power(w) [ 額定功率 ]	5V DC
Resistance taper [ 阻抗變化特性 ]	B
Residual resistance [ 殘留阻值 ]	全阻值3%Ω Max.
Sliding noise [ 滑動雜音 ]	300mV Max
Insulation resistance [ 絕緣阻抗 ]	100MΩ Min. at DC 250V
Withstanding voltage [ 耐電壓 ]	1 minute at AC 250V
Max. operating voltage [ 最高使用電壓 ]	AC 50V
Mechanical Characteristics [ 機械性能 ]	
Operation torque [ 回轉力矩 ]	10~80gf.cm
Rotation stopper strength [ 止動強度 ]	3Kgf.cm Min
Switch Travel [ 開關移動量 ]	9±0.5 mm
Endurance Characteristics [ 耐久性能 ]	
Rotational life [ 回轉壽命 ]	More than 100,000 cycles